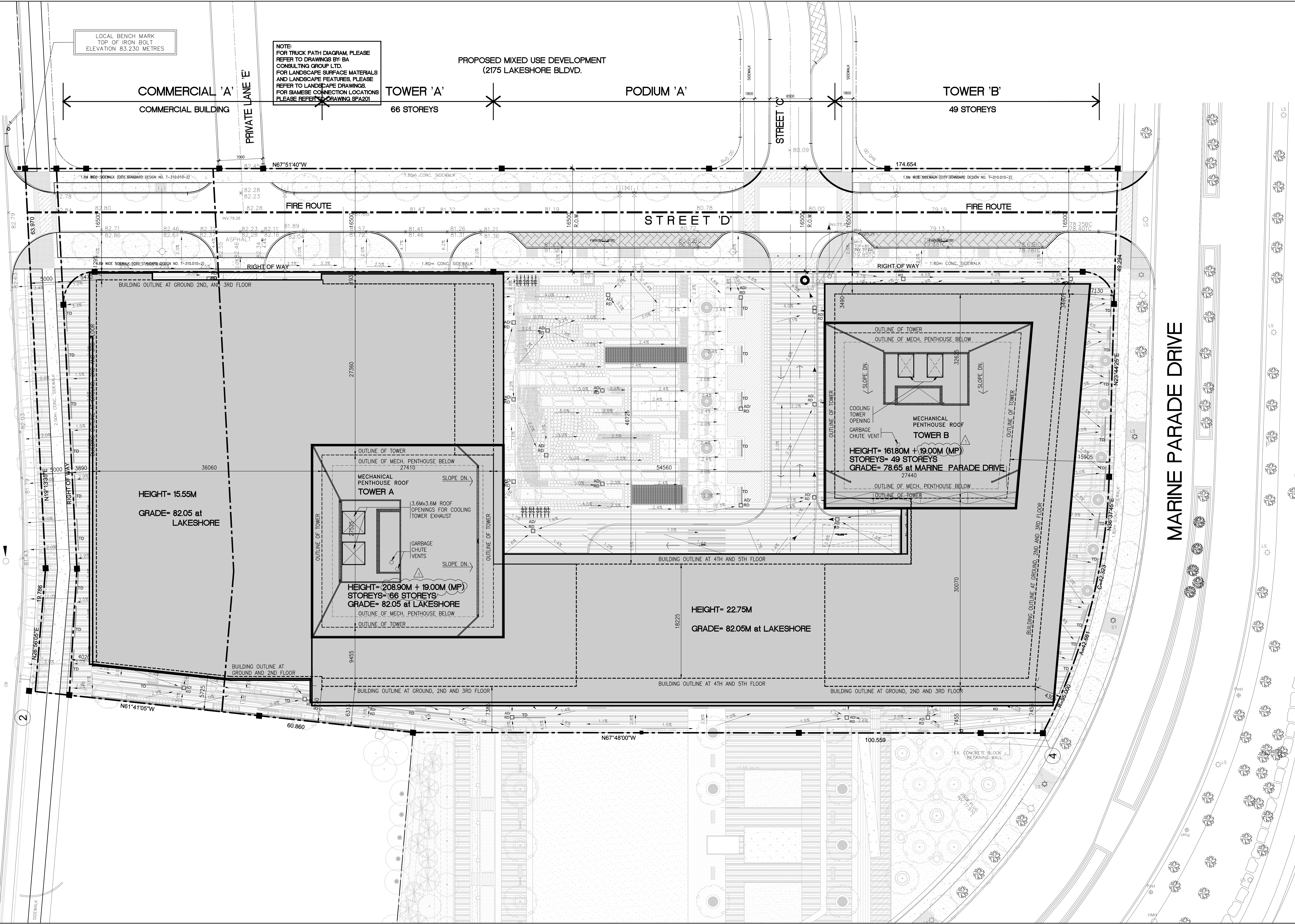


LAKE SHORE BOULEVARD WEST

MARINE PARADE DRIVE



LOCAL BENCH MARK
TOP OF IRON BOLT
ELEVATION 83.230 METRES

NOTE:
FOR TRUCK PATH DIAGRAM, PLEASE
REFER TO DRAWINGS BY: BA
CONSULTING GROUP LTD.
FOR LANDSCAPE SURFACE MATERIALS
AND LANDSCAPE FEATURES, PLEASE
REFER TO LANDSCAPE DRAWINGS.
FOR BEMISE CONNECTION LOCATIONS
PLEASE REFER TO DRAWING SPA201

PROPOSED MIXED USE DEVELOPMENT
(2175 LAKESHORE BLDVD.)

GENERAL NOTES

NOT FOR CONSTRUCTION

KEY PLAN (NTS)

Zeidler Partnership Architects
318 Bloor St. W.
Toronto, ON
M5V 2X2

DESIGN CREDIT

NOTES

- PROPOSED SIDEWALK ALONG LAKE SHORE WEST, MARINE PARADE DRIVE, AND STREET D WILL BE DESIGNED ACCORDING TO CITY STANDARD DWG. NO. T-310.010-2 (SEE T-310.010-2).
- PAVED CONCRETE CURB, DEPRESSION CURB, AND OTHER SHALL BE DESIGNED ACCORDING TO CITY STANDARD DWG. NO. T-600.05-1 (SEE T-600.05-1).
- EACH DRIVEWAY SHALL BE DESIGNED ACCORDING TO THE CONSTRUCTION SPECIFICATIONS DETAILED IN CITY STANDARD DWG. NO. T-300-01 (SEE T-300-01).
- NON-RESIDENTIAL COMPONENT TO SHARE THE TIRE & LOADING SPACES WITH THE RESIDENTIAL COMPONENT AND ARRANGE FOR THEIR COLLECTION BAYS TO BE SCHEDULED ON OPPOSITE ENDS FROM THOSE OF THE RESIDENTIAL COMPONENT.

NO.	DATE	ISSUED FOR PPR AND C&A	REMARKS
1	17 APR 2015		

REVISIONS

CONTRACTOR MUST VERIFY ALL DIMENSIONS AND BE RESPONSIBLE FOR SAME. REPORTING ANY DISCREPANCIES TO THE ARCHITECT BEFORE COMMENCING THE WORK.

PRINTS ARE NOT TO BE SCALED.

RICHMOND Architects Ltd.

243 COLLEGE STREET
SECOND FLOOR
TORONTO, ONTARIO M5T 1R5

T 416 961 1567
F 416 961 1321
RICHMONDARCH.COM

Job Title: Proposed Mixed Use Development
2183 Lake Shore Boulevard West

EMPIRE COMMUNITIES
125 Villabot Crescent,
Vaughan, Ontario, L4K 4K2

Sheet Title: **SITE PLAN**

North

Date Plotted: 17 APR 2015 Date: 6 JULY 2011

Drawn By: Scale: 1:200

Checked By: Revision Number:

Job No: **2010-031** Sheet No: **SPA102**